

MONTHLY MEMBERSHIP PROGRESS REPORT

LOCATION INDIA

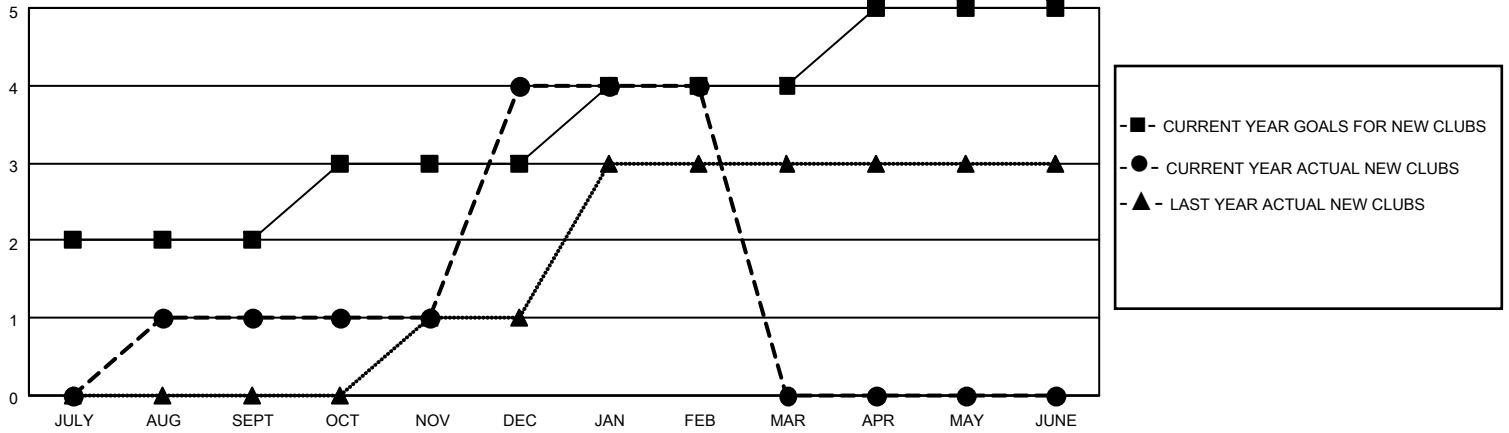
District 316 G

Results as of: 2/28/2021

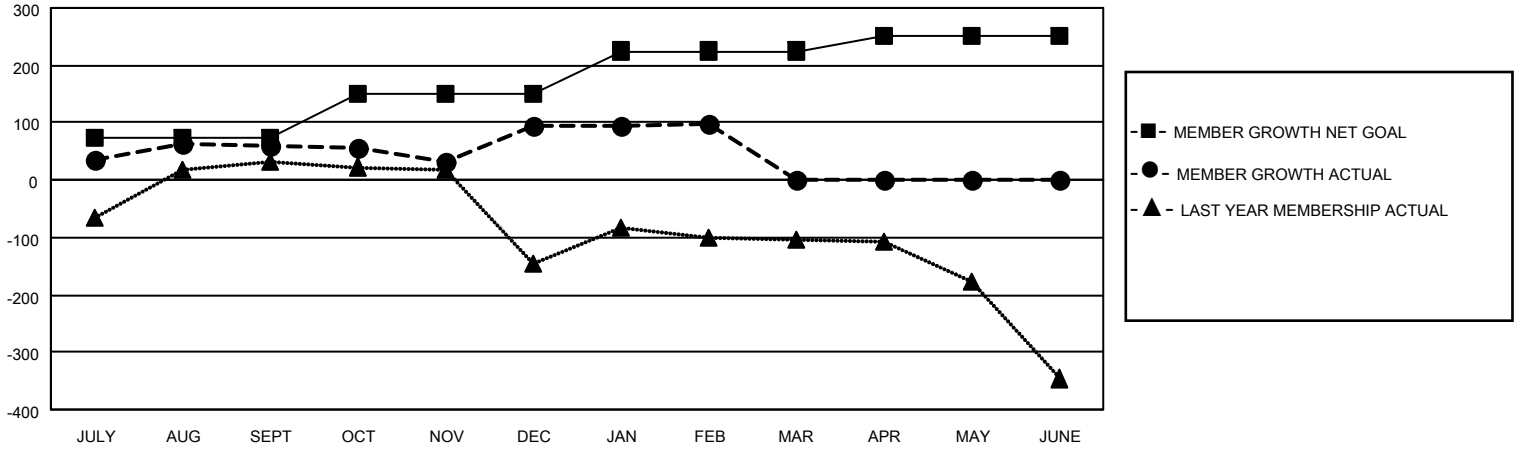
Clubs			
RESULTS FOR 2020-2021			
QUARTER	NEW CLUB GOAL	NEW CLUBS	DROPPED CLUBS
JULY/AUG/SEPT	2	1	1
OCT/NOV/DEC	1	3	0
JAN/FEB/MAR	1	0	0
APR/MAY/JUNE	1	0	0

Members			
RESULTS FOR 2020-2021			
QUARTER	MEMBER GROWTH NET GOAL	MEMBER GROWTH ACTUAL	DROPPED MEMBERS ACTUAL (including transfers)
JULY/AUG/SEPT	75	90	26
OCT/NOV/DEC	75	180	142
JAN/FEB/MAR	75	6	0
APR/MAY/JUNE	25	0	0

GOALS AND ACTUAL NEW CLUBS CUMULATIVE



GOALS AND ACTUAL MEMBERS CUMULATIVE



DROPPED CLUBS: 1

45 CLUBS OF 69 ADDED 1 OR MORE NEW MEMBERS

<u>GENDER DISTRIBUTION</u>	
MALE	2,064 (82.59%)
FEMALE	435 (17.41%)

<u>DROPPED MEMBERS</u>	
DECEASED	23
CLUB CANCELLED	0
OTHER	145
TOTAL	168

[CLICK HERE FOR CUMULATIVE MEMBERSHIP DATA](#)

TOTAL FAMILY UNIT MEMBERS	932
FAMILY MEMBERS PAYING HALF DUES	578